

Patent Workshop: Patent Strategies in the Wireless and Cloud Environments

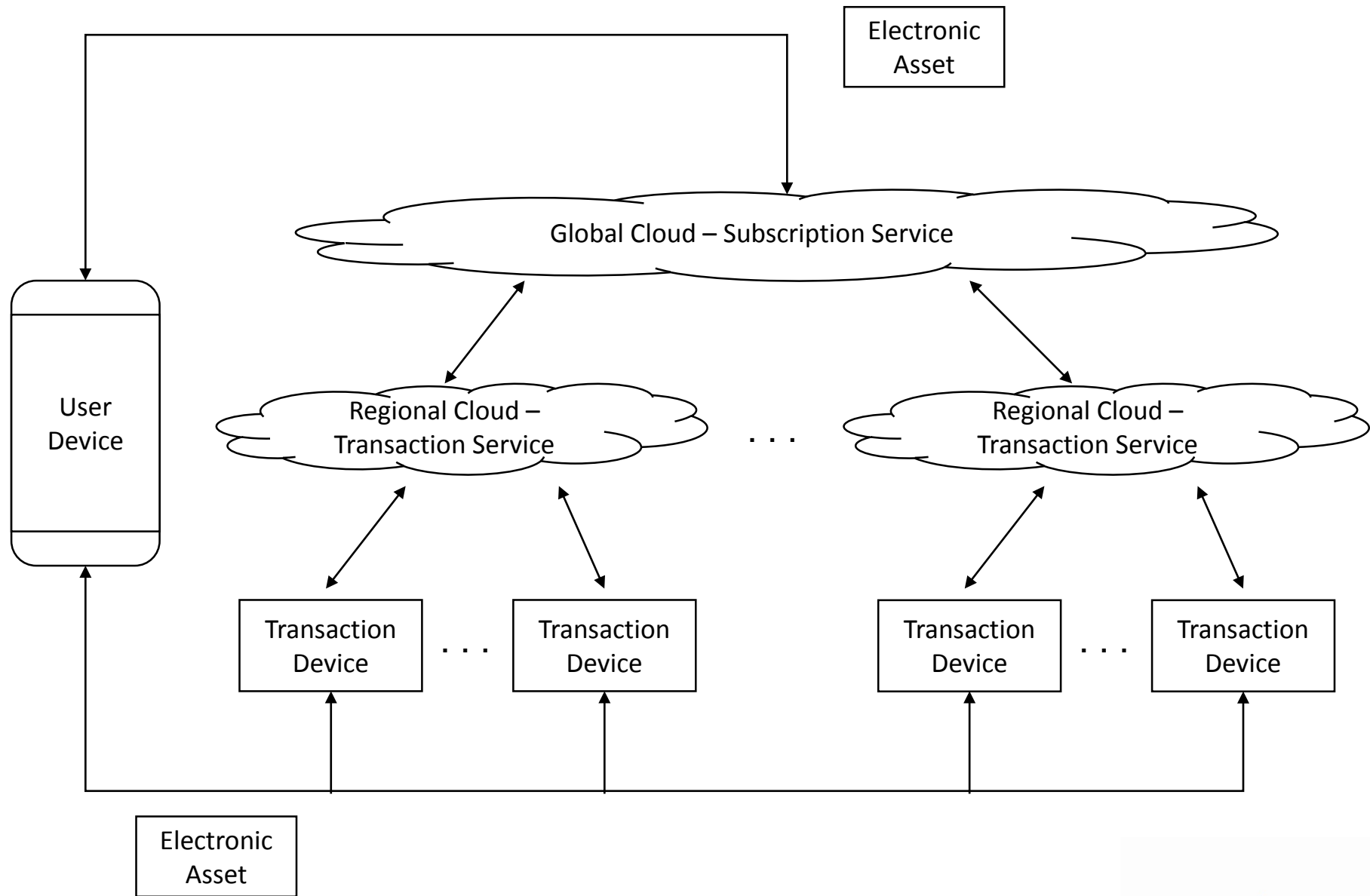
FICPI 15th Open Forum

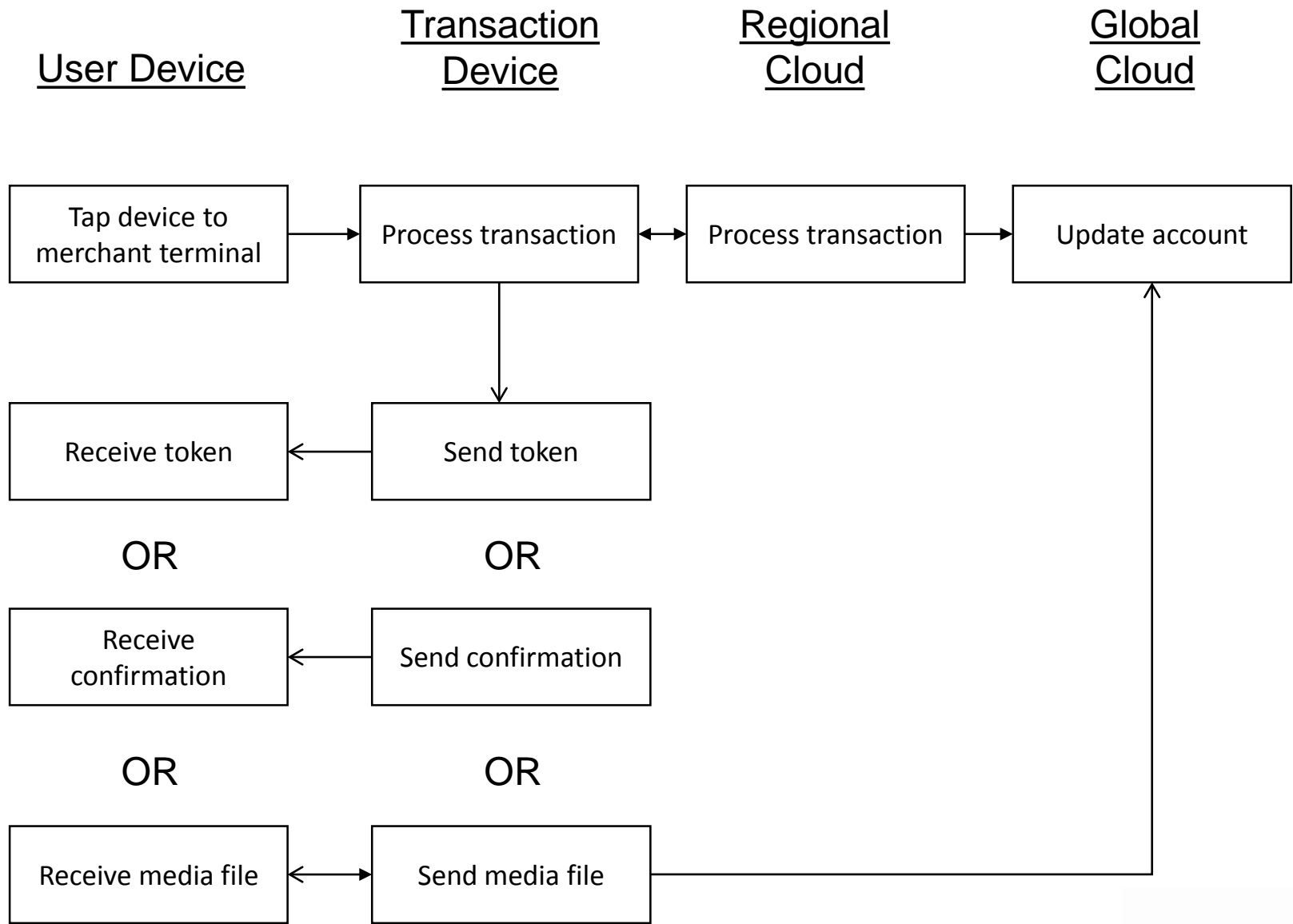
5-8 November, 2014

Barcelona, Spain

Co-Chairs: Brett Slaney (CA) and Dr. John-Paul Rooney (UK)

The logo for the law firm Blakes, featuring the name in a stylized, cursive script.The logo for the law firm Withers & Rogers, featuring the name in a serif font with a yellow square containing an ampersand between the words, and the tagline "Patent and Trade Mark Attorneys" below.

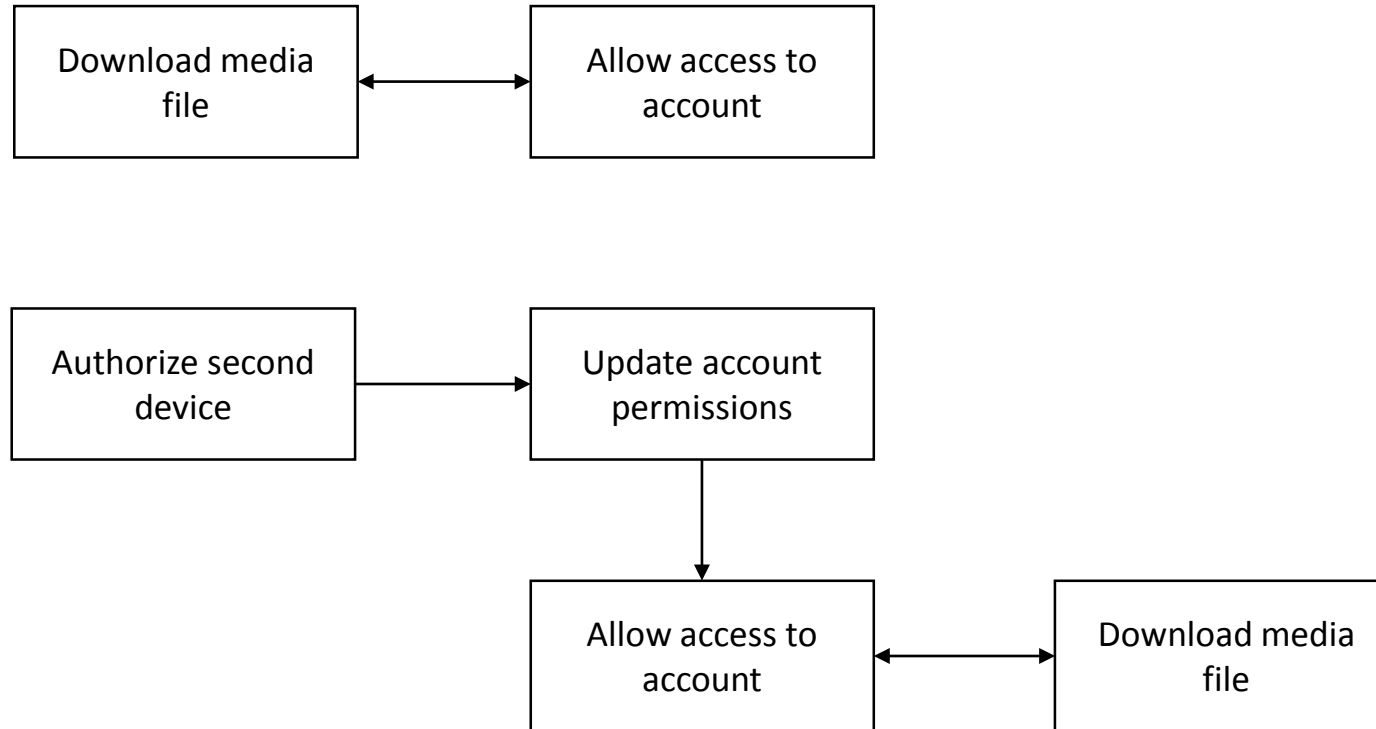




User Device 1

Global
Cloud

User Device 2



Blakes

Withers & Rogers
Patent and Trade Mark Attorneys

WORKSHOP ISSUES FOR DISCUSSION

1. Claim strategies
 - Protect which parts of system?
 - Claim types – method, CRM, apparatus, system
2. Jurisdictional strategies
 - Which entities in which countries?
 - Subject matter issues in some countries?
3. Filing strategies
4. Enforcement and Licensing issues
 - Contributory infringement (single actor?)
 - System versus method claims
 - Detectability
 - Does jurisdictional strategy make sense?
5. Standards, etc.

The logo for Blakes, featuring the word "Blakes" in a stylized, cursive script.

WORKSHOP TAKEAWAYS – OUR STRATEGY

Blakes

Withers & Rogers
Patent and Trade Mark Attorneys

THANK YOU!



Partner/Patent Agent
brett.slaney@blakes.com

Blakes



Partner
jprooney@withersrogers.com

Withers & Rogers
Patent and Trade Mark Attorneys