



# Session 2: AI & Practice Management

Reflections on AI use in the IP profession - which parts of the work may be handled by AI, and which parts will continue to require experience and human expertise in the near future.



**Ezgi Baklacı Gülkökar**

**Morođlu Arseven, Türkiye**



MOROĞLU ARSEVEN

# AI ADOPTION IN IP PRACTICE

—  
EZGI BAKLACI GÜLKOKAR, LL.M.  
PARTNER

April, 2026

[www.morogluarseven.com](http://www.morogluarseven.com)

MOROĞLU ARSEVEN

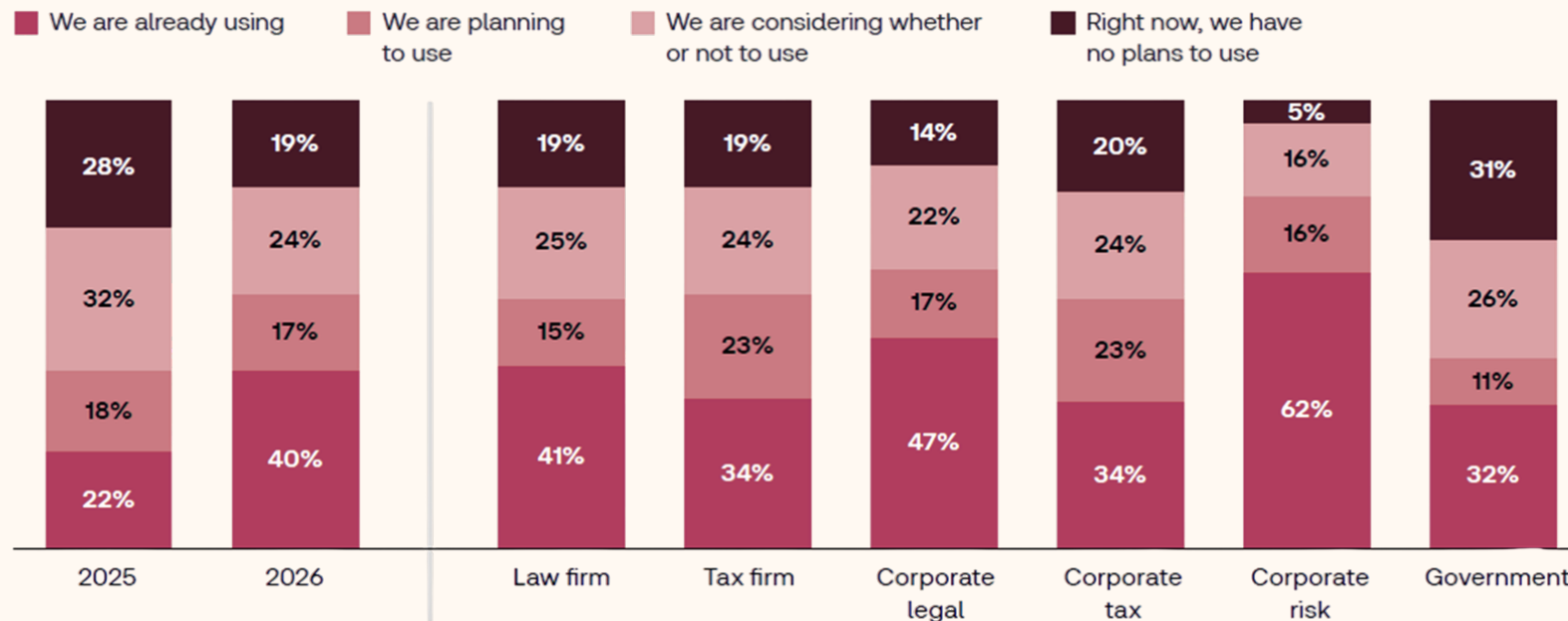
01

# Opening and Introduction

Openin

# Inevitable, and Already Here

Organizational GenAI usage, by organization type



—● AI is Already Here:

- As of 2026, AI is integrated into all major aspects of IP practice worldwide
- Thomson Reuters survey of **1,500+ professionals in 27 countries** confirms AI is now an integral part of the legal profession
- **40% of organizations** say AI is being adopted in their practice
- IP prosecution tasks are well-suited to AI: structured, repetitive, and rule-based

<sup>1</sup> Thomson Reuter Institute's 2026 AI in Professional Services Report

## AI Use in IP Practice

# AI Across IP Services

## Patent Services:

- AI-powered prior art search across patents and academic literature
- Claim drafting and construction assistance
- Freedom to operate (FTO) analysis
- Patent portfolio management and monitoring

## Workflow Automation:

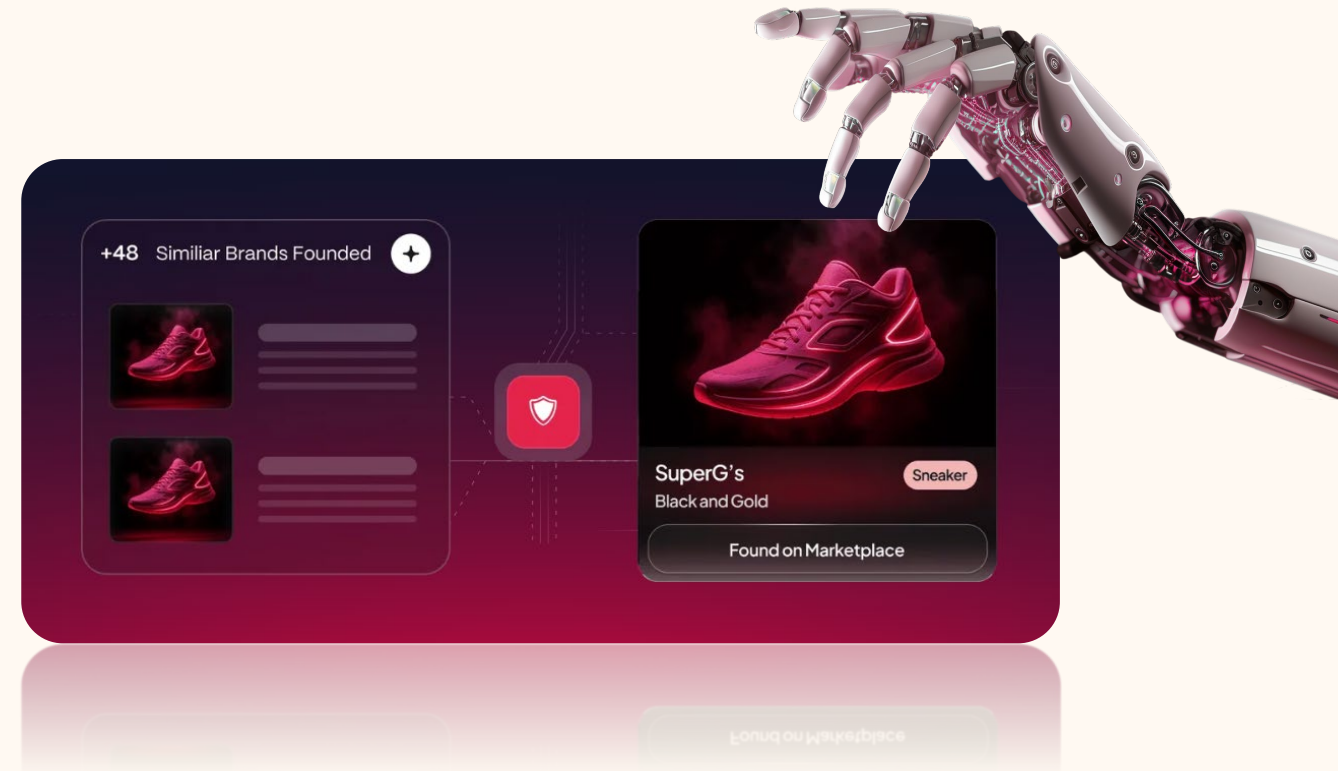
- **Filing:** Automated trademark application preparation and submission
- **Deadlines:** AI-driven deadline tracking and status reports
- **Responses:** Office action response drafting with AI assistance
- **Evidence:** Digital evidence capture and authentication tools

## Online Infringement:

- Trademark monitoring.
- Image and text recognition to detect counterfeit listings
- Ability to scan millions of listings across platforms
- Enforcement: take-down notices

## Trademark Services:

- Clearance searches across classes and jurisdictions
- Watch services and infringement monitoring





MOROĞLU ARSEVEN

**03**

---

---

# **Why AI is Inevitable**

- **Speed**

- AI processes documents in minutes vs. hours of manual billable work
- 

- **Competition**

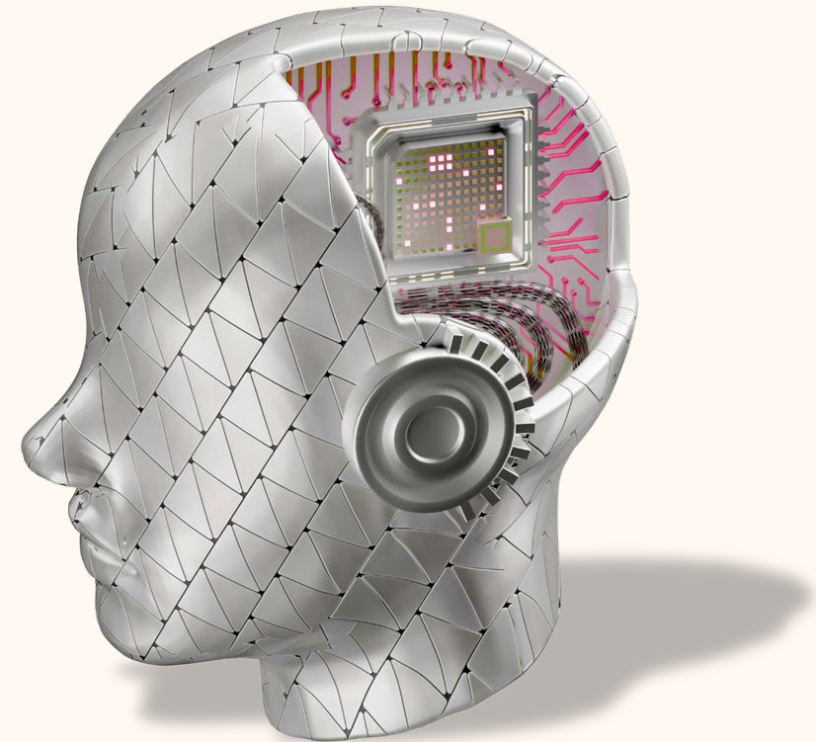
- Competitors using AI may undercut on price and turnaround
- 

- **Client Expectations**

- Clients will seek experts for complex, high-judgment matters
- 

- **Costs & Fees**

- Change in fee structures??
  - Predictability
  - Critical thinking and legal judgement
- 



**Advantages of AI**

# **Advantages for IP Work**

AI in IP Practice

# How AI Supports Legal Work Today



## Document Review & Summarization

Quickly recalls case history from prior correspondence .  
No manual re-reading.



## Automated Document Drafting

Create AI workflows .  
Include case specific details for solid first drafts .



## Tabular Review Tool

Extracts specific data points from multiple documents simultaneously  
puts data into a structured, comparative tables.



## Playbooks

Predefined rules and fallback positions applied consistently by AI  
across every negotiation.



## Matter Projects & Legal Research

Dedicated AI project per matter; database fed with articles, opinions  
& court decisions for targeted research.

## KEY TAKEAWAY

The more we structure our workflows & define our standards, the more AI allows us to work on strategies that require a lawyer's judgment.

04

# Risks & Disadvantages

# Risk & Disadvantages

# What Could Go Wrong?

## Hallucination:

- AI can fabricate irrelevant citations.
- Generates technically plausible but legally incorrect claim language
- Risk of professional misconduct.
- All AI output must be verified before filing or sending

## Threat to Current Jobs:

- AI automizes the tasks of junior associates, paralegals, and support staff
- Traditional IP career paths are being compressed

## Change in Billing Structure:

- AI will lower the time spent on some tasks.
- Clients may question the billable hour fee structure.

## De-skilling Risk:

- Cognitive and Skill Erosion
- Overreliance may reduce lawyers' deep legal reading
- Less developed legal instincts

# Risk & Disadvantages

# Legal and Ethical Obligations

## Confidentiality:

- Most critical risk: be aware of each AI tool's data and privacy standards
- Know if your vendor uses client data to train models
- Enterprise agreements offer stronger protections than consumer products
- Shadow AI

## Compliance with Legal Expectations:

- Bar guidance is evolving.
- **No excuse for hallucination or AI error.**
- Updated engagement letters.

## Professional Responsibility :

- **Supervising attorney is responsible for output**
- No AI output should leave the office without human review

## Competence:

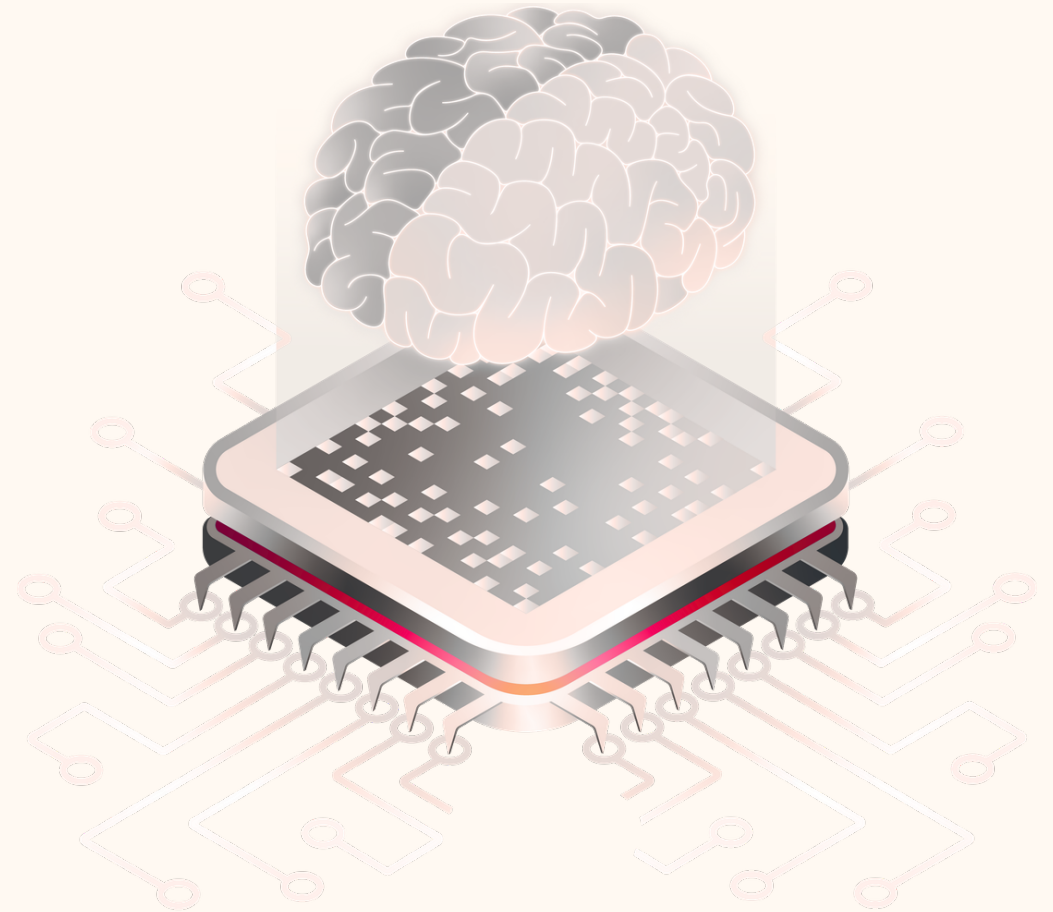
- Duty of competence includes technological competence (ABA Model Rules)
- Lawyers must understand the tools they use, including AI

Framework & Closing

# Responsible AI Adoption

● Possible Framework:

- Verify everything. No AI output leaves without human review
- Check security compliance
- Update engagement letters to address AI use and confidentiality
- Train the team. Tools are only as good as the practitioners using them

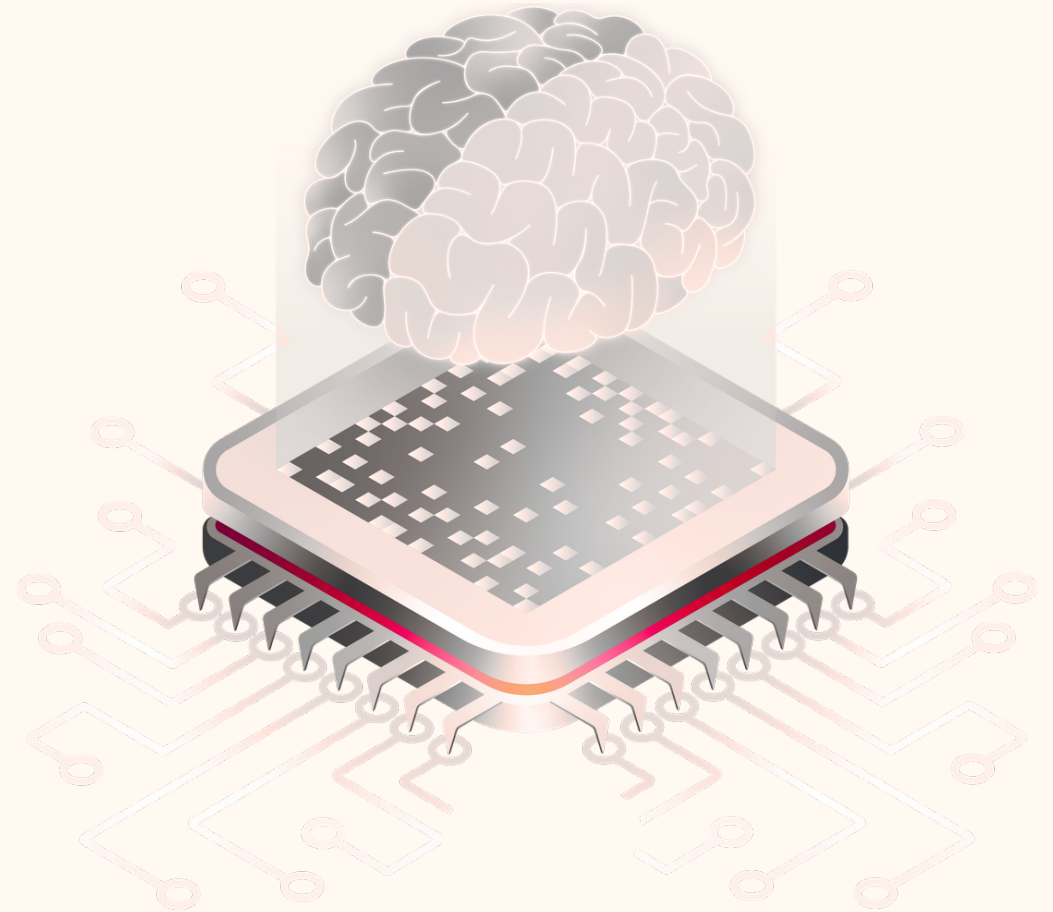


Framework & Closing

# Trends

—● **AI Native Firms:**

- **AI-Native Law Firms:** built from ground up with AI at core of operations  
Smaller teams with fewer traditional hierarchy layers
- **Some AI-native firms are being invested in by major law firms**  
Still early to assess long-term viability of this model



## Closing Thoughts

# Embrace the Wave



Fax



Internet



Laptops



Mobile



AI



### Stay Informed

Watch developments closely. Observers will be left behind. Commit to continuous upskilling.



### Integrate Thoughtfully

Embed AI as multiplier of your expertise. It is not a replacement of expertise.



### Preserve What Defines Us

Judgment, creativity, and ethical standards remain the irreplaceable core of the profession.

The professionals who will thrive are those who embrace change thoughtfully while preserving the judgment and ethics that define our profession.

# MOROĐLU ARSEVEN

[www.morogluarseven.com](http://www.morogluarseven.com)

April, 2026

# AI for an IP Law Firm

Real-world implementation insights for IP professionals



# Control the FOMO / Hype

## Tools, Not Substitutes

AI agents enhance efficiency — they don't replace professional judgment or legal strategy.

## Don't Confuse the Two

Learning a tool  $\neq$  learning the law.

## Real Adoption Costs

Training and change costs may not justify short-term adoption.

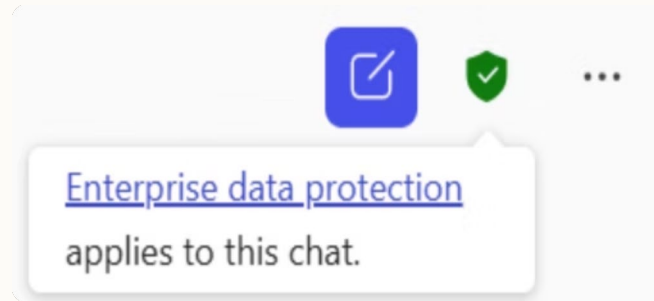
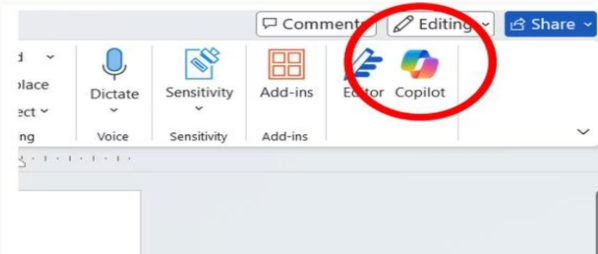
## Efficiency, Not Strategy

AI accelerates execution — strategy remains human.

# Options for an IP Firm

## General AI Assistants

Co-pilot-style chat integrated into tools like MS Word — easy to adopt, minimal setup.



## Key Benefits

- Data & privacy concerns
- Mitigated via enterprise-grade subscriptions

## Considerations

- Easy to adopt, minimal setup
- Drafting, summarization, quick research

## Specialized AI Tools

- Patents: Patlytics, Edge, Solve Intelligence, DeepIP
- Trademarks: Markify, TrademarkNow, Clarivate RiskMark
- Contracts/Copyright: Harvey, CoCounsel, Ivo AI, ContractPodAi
- Workflow: Clio, Litera, Zapier

📄 No single model fits all — identify task-specific tools.

Word File Edit View Insert Format Tools Table Window Help

Document3 General\*

Search (Cmd + Ctrl + U)

Home Insert Draw Design Layout References Mailings Review View Acrobat

AutoSave

Comments Editing Share

Aptos (Body) 12

Normal No Spacing Heading 1 Heading 2 Title

Styles Pane Dictate Sensitivity Add-ins Editor Copilot Create PDF and share link Request Signatures

Copilot

Model

- Auto
- GPT

Let

- GPT 5.3 Quick Response
- GPT 5.4 Think Deeper
- GPT 5.2 Quick Response
- GPT 5.2 Think Deeper**
- New temporary chat

Go further with Copilot

Access specialised agents, connect to work data, and more.

Upgrade Copilot

Build a technical documentation using specifications from file

See more

Page 1 of 1 0 words English (United States)

Focus 213%

# Specialized AI Tools

Recommended for Operations:

1

## Billing

Timekeeping automation, draft descriptions, guideline flags.

2

## Docketing

Auto-create dockets; extract deadlines from documents.

3

## Workflow

Task assignment, tracking, real-time visibility, bottlenecks.

4

## Administration

General support functions.

# Using AI for Patent Drafting

❏ Opting out isn't really an option — multiple tools available, each with their own pros and cons.

## Advantages



### Draft Faster

Reduce repetitive work; identify structural issues



### Advanced Capabilities

Generate chemical structures, technical figures



### Strategic Control

Preserves judgment on claim scope & fallback positions

## Implementation



### Build Templates

Client, domain & jurisdiction-specific templates. Develop multiple templates tailored to specific requirements.



### Create Prompt Banks

Use specific prompts instead of general prompts. Consistent terminology, prevent hallucinations.



### Considerations

Higher cost vs. general tools. Requires training to use effectively.

# Common AI Drafting Issues

1

## Redundancy / Verbosity

"...a processor configured to process data, wherein the processor processes the data by performing data processing..." —Circular and redundant language; Adds no legal value

2

## Hallucinated Elements

"...a blockchain verification module..." — Not present in specification; Violates written description requirement

3

## Over-Generalization

"...configured to perform any suitable analysis..." N Too broad ↓ may fail enablement, Examiner may object: Undue breadthX

4

## Antecedent Inconsistency

"user input" ≠ "input data" — frequent AI issue; must be consistent

5

## Improper Functional Claiming

"means for analyzing data using AI" — triggers means-plus-function unintentionally

# Patent Drafting Workflow



## Draft Broad Independent Claims

1. Draft broad independent claims covering the invention. Then add dependent claims that specify components, ranges, concentrations, conditions, and other refinements.
2. Seek suggestions on claims from AI
3. Finalize Claims



## Prepare Draft Drawings and/or Prepare Term Bank

Identify the list of elements, technical terms, chemical or biological components, and abbreviations used throughout the disclosure.



## Create a Draft Strategy/Outline

Set the sequence for the Figures / Embodiments and specification sections so the disclosure follows a consistent drafting structure.



## Select a Template for the Specification

Create a template tailored to the specific jurisdiction, client, and/or technical domain before drafting begins.



## Use Prompts to Keep Terminology Consistent

Use prompts to keep terminology consistent with the term bank or claims, and to rely only on information from the disclosure document to prevent hallucinations.

# Best Practices for AI-Assisted Patent Drafting

## Preparation is Key

- Have a drafting plan/outline
  - Claim scope
  - Flow of draft and sections
  - Points to be covered in each section
- Identify specific points for research:
  - Stabilizing agents which are relevant for tyre compositions
  - Identify the characterization methods used for mechanical properties of a composite

## Before Using AI

- First draft the claims yourself without any AI input to prevent bias (review bias, anchoring bias)
- Using AI as starting point may completely miss the strategy

# Prompting Best Practices

## Background Section

Instead of "Draft a background section", use:

"Draft a Background section limited to 200-250 words. Neutral, factual language. No specific problems highlighted."

## Detailed Description — Software

Instead of "Draft detailed description of the Drawings", use:

"Draft detailed description for [figure/embodiment], introducing each element and describing interactions enabling claims [numbers]."

## Claims — Software

"Draft three consistent independent claims: (1) apparatus, (2) method, (3) non-transitory CRM. Formal patent language, consistent terminology, avoid unnecessary limitations."

## Claims — Life Science

Instead of "Draft claims for the invention", use:

"Draft U.S. method of treatment claims for [gestational diabetes], max 20 claims, at least one independent. Omit dosage in independent claim — define in dependents."

# Tips to Reduce AI Hallucinations

Minimizing AI-generated inaccuracies is crucial for high-quality patent drafting.



## Leverage Specialized AI Tools

Prioritize AI tools specifically designed for patent drafting over general-purpose AI assistants (e.g., specialized patent tools vs. ChatGPT). These tools are often trained on relevant datasets, reducing the likelihood of generating irrelevant or incorrect information.



## Provide Comprehensive Input

Upload detailed technical disclosures and specifications. Avoid relying solely on an Invention Disclosure Form (IDF) which may lack the granularity needed for AI to generate accurate and complete content, preventing factual errors.



## Utilize Specific Revision Prompts

After initial drafts, use precise prompts to correct or exclude identified problematic content. This guides the AI to refine its output based on your specific requirements and observations.

Example:

"Do not include 'blockchain verification module' or any reference to 'quantum computing' in the specification."

"Revise the specification to remove the advantages associated with 'proprietary algorithms'."

# Key Change

Allocate sufficient time for review and be mentally prepared that the review time may be significantly longer than convention.

Watch out for “review bias”

# Key Takeaways - Patents

- Do not give AI tools to juniors and young professionals without supervision.
- Define claim scope and fallback positions.
- Understand trade secret vs. patent disclosure strategy.
- Plan divisionals, continuations, embodiment disclosure.
- Verify all AI-generated content.



Thank You

Questions? We'd love to connect.

 +91 11 40200200 |  [email@obhanmason.com](mailto:email@obhanmason.com) |  [www.obhanmason.com](http://www.obhanmason.com)

# AI's Impacts:

IP OFFICES, CLIENTS, AND OURSELVES

**Brett Slaney**

CPST Intellectual Property

April 20, 2026



# AI and the IP Offices - general

---

- Most Offices have an “AI agenda”
  - Searching (including image searching)
  - Classification
  - Office Action Generation (more than boilerplate selection)
  - Translation
  - Transcription (e.g., EPO oral proceedings)
- Important: will we have access to the same tools?
- Future: will we see fully autonomous AI examiners?

# AI and the IP Offices - issues

---

- AI-generated prior art – IDSs, disclosure dates, are they enabled?
- Disclosing use of AI to patent office – in limited circumstances
  - Existing duties of candor and good faith sufficient (for now)
  - Possible - If AI significantly contributed to the conception of the invention, it may be necessary to disclose this to ensure that any human inventor's contribution is clearly identifiable and qualifies as an inventor
  - <https://www.federalregister.gov/documents/2024/04/11/2024-07629/guidance-on-use-of-artificial-intelligence-based-tools-in-practice-before-the-united-states-patent>

# AI and the IP Offices

---

- FICPI Resolution from Naples, October 2025: “Human-centric use of AI in the IP System”
- WELCOMING the idea of a human-centric approach to the use of AI, where it is a tool to assist a human being;
- ACKNOWLEDGING that AI used responsibly may help in the preparation of applications for IP rights, in the examination of IP rights, and in arriving at final decisions on IP rights with high quality and in a very efficient way;
- URGES IP Offices, administrative bodies and Courts to be transparent about their use of AI in conducting searches and rendering opinions and decisions;
- FURTHER URGES IP Offices and IP courts to use AI responsibly in a human-centric manner, such that substantive decisions are always made by at least one competent human examiner or human judge.

# AI and our Clients

---

- FICPI Resolution from Naples, October 2025: “Human-centric use of AI in the IP System”
- URGES IP Attorneys to be transparent with their clients about their use of AI in providing services to them;
- Some clients want us to use AI
- Some clients expressly forbid us from using AI
- Many clients appreciate that AI should fit somewhere in the workflow
- Have the discussion before a decision is made for you!

# AI and our Clients - example

---

- Begin with an invention disclosure (prepare or get from client) – *traditional/AI*
- If necessary, get background for technical field - *AI*
- Draft a few claims and a few diagrams (+ terms defined) - *traditional*
- Have AI tool prepare full specification, additional drawings, additional dependent claims or claim types - *AI*
- Review and revise – *traditional*
- Use AI proofing to catch manual errors - *AI*
- If appropriate some post analysis – e.g., prior art, detectability, freedom to operate, other? – *traditional + AI*
- Conclusion: cut out tedious drafting without losing control or key inputs
- But...do we split these tasks with our clients?

# The Future: Impact on Profession

---

- Balancing costs of tools with reduction in time or overhead – find the sweet spot
- But, if we are replacing the role of trainee with AI, how do we train new professionals?
  - How do they become competent enough to do the hard stuff?
- Can AI help with training?
- Will the profession increase or decrease in size?
  - Easier to draft – more filings, more prosecution
  - Easier to draft – do not need as many professionals
- Will companies be able to reduce reliance on firms and/or in-house attorneys?
  - Is this desirable?
- Compare to impact of other leaps in technology
  - More patents, more prior art (thickets) ... but better search tools
  - If patents become less expensive and more accessible does amount of work increase, decrease, stay the same?

# AI's Impacts: IP Offices, Clients, and Ourselves

Brett Slaney

April 20, 2026



# Thank You!

## Questions and Discussion



# Seminar Cocktail Reception

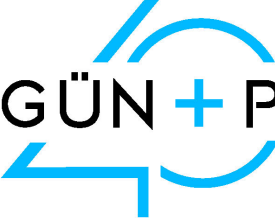
sponsored by

**ATG** | LAW FIRM

**PARAGON**·IP

MOROĞLU ARSEVEN

**INV**  **KAT**  
INTELLECTUAL PROPERTY SERVICES

 **GÜN + PARTNERS**



**Strengthening the practice of the independent IP attorney**

[www.ficpi.org](http://www.ficpi.org)